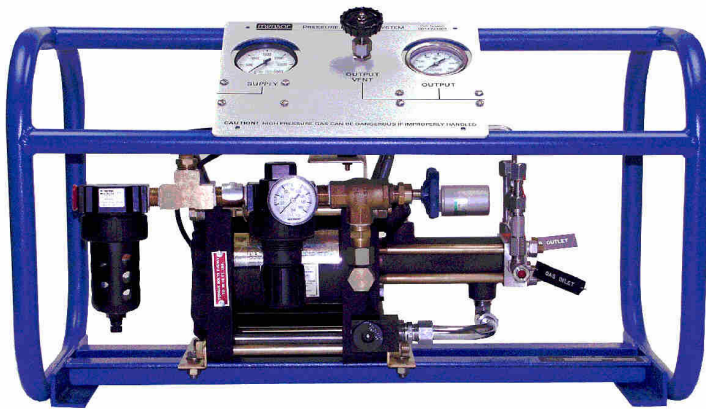


Model 75

**mentor**

## *Pressure Booster System Model 75*



The Model 75 Pressure Booster System is an optional accessory that is used to provide a pneumatic pressure supply to the mentor PCS400/Model 410 high pressure control unit or equivalent system. Consult factory for other applications.

The Pressure Booster System is a single piston air driven gas compressor designed for boosting bottle nitrogen up to 6400 psig. Mounted in a rollbar frame, the unit includes an operator control panel, with gauges for supply pressure, output reference pressure and an output vent valve. Safety features include internal 4x rated stainless steel tubing, an auto shut-off valve and an output relief valve.

The Pressure Booster System requires a drive pressure input from shop air and supply pressure input from bottled nitrogen or another inert gas. The output pressure is adjustable by a knob on the drive pressure regulator. A nitrogen pressure regulator is not required, as the unit will function with any supply gas pressure from 300 to 3000 psig. The auto shut-off valve shuts down the system if bottle pressure is less than 300 psig.

### Features

- Boosts bottle nitrogen to 6400 psi
- Permits use of nitrogen bottle to 300 psi
- Drive speed regulator
- Drive speed valve
- Rollbar frame mounted
- High pressure hose option
- CE Compliant
- Simplified operator control panel
- Input and output gauges
- Built-in 20 micron filter
- Output relief valve
- Auto shut-off valve
- Output vent valve

**WIKAL**

 Part of your business

## SPECIFICATIONS

### General Specifications

#### Input Pressure

Supply Source 300 to 3000 psig unregulated nitrogen bottle;  
Drive input 100 to 150 psig shop air (100 psi recommended)

#### Fittings

Supply and output ports are 7/16 - 20 SAE/MS straight threads per MS 16142 and SAE J514 table J. Adapter fittings provided are Gyrolok 1/4" stainless tube fittings with nuts and ferrules.

#### Filter

20 micron filter mounted on drive pressure manifold. Removable for cleaning.

#### Relief Valve

Output relief valve mounted on underside of control panel. Cracking pressure is adjustable.

#### Size

L 28.25" (71.76 cm) x W 14" (35.56 cm) x H 16.25" (41.28 cm)

#### Weight

57 lbs. (25.85 kg)

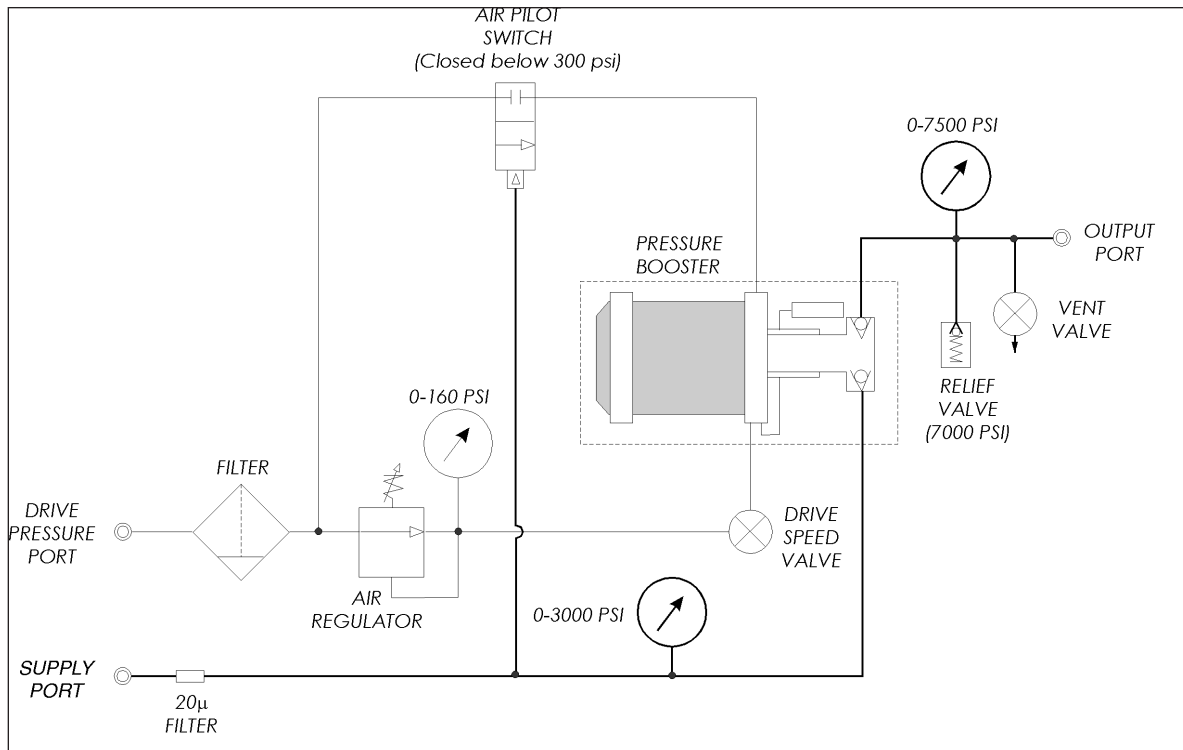
### Performance Specifications

#### Response Time

The time for the Pressure Booster System to reach the desired output pressure will vary due to the volume to be filled and/or the available pressure at the nitrogen bottle connected to the supply input. Typical response with 2500 psig supply pressure is approximately 6 piston strokes per 100 cc of volume on output at 2 seconds/piston stroke.

### Ordering information

|                    |                                  |
|--------------------|----------------------------------|
| <b>Part Number</b> | 0014721001                       |
| <b>Description</b> | Model 75 Pressure Booster System |



The calibration program at Mensor is accredited by A2LA as complying with both the ISO/IEC 17025:2005 and the ANSI/NCSL Z540-1-1994 standards. All Mensor primary standards are traceable to NIST. Mensor is registered to ISO9001:2008.



Due to continuous improvement, Mensor reserves the right to change specifications without notice.

© 2009 Mensor

Represented By:

**Mensor • 201 Barnes Drive • San Marcos, Texas 78666**  
**512.396.4200 • 800.984.4200 • sales@mensor.com • www.mensor.com**